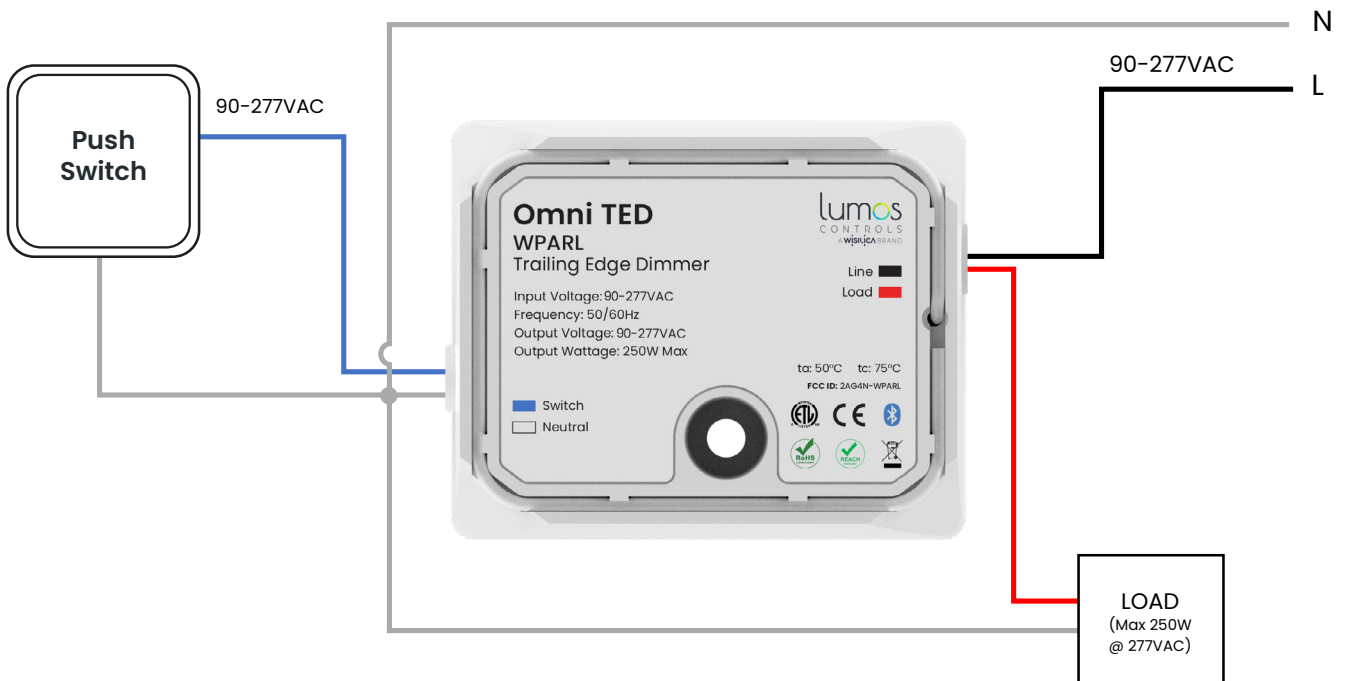
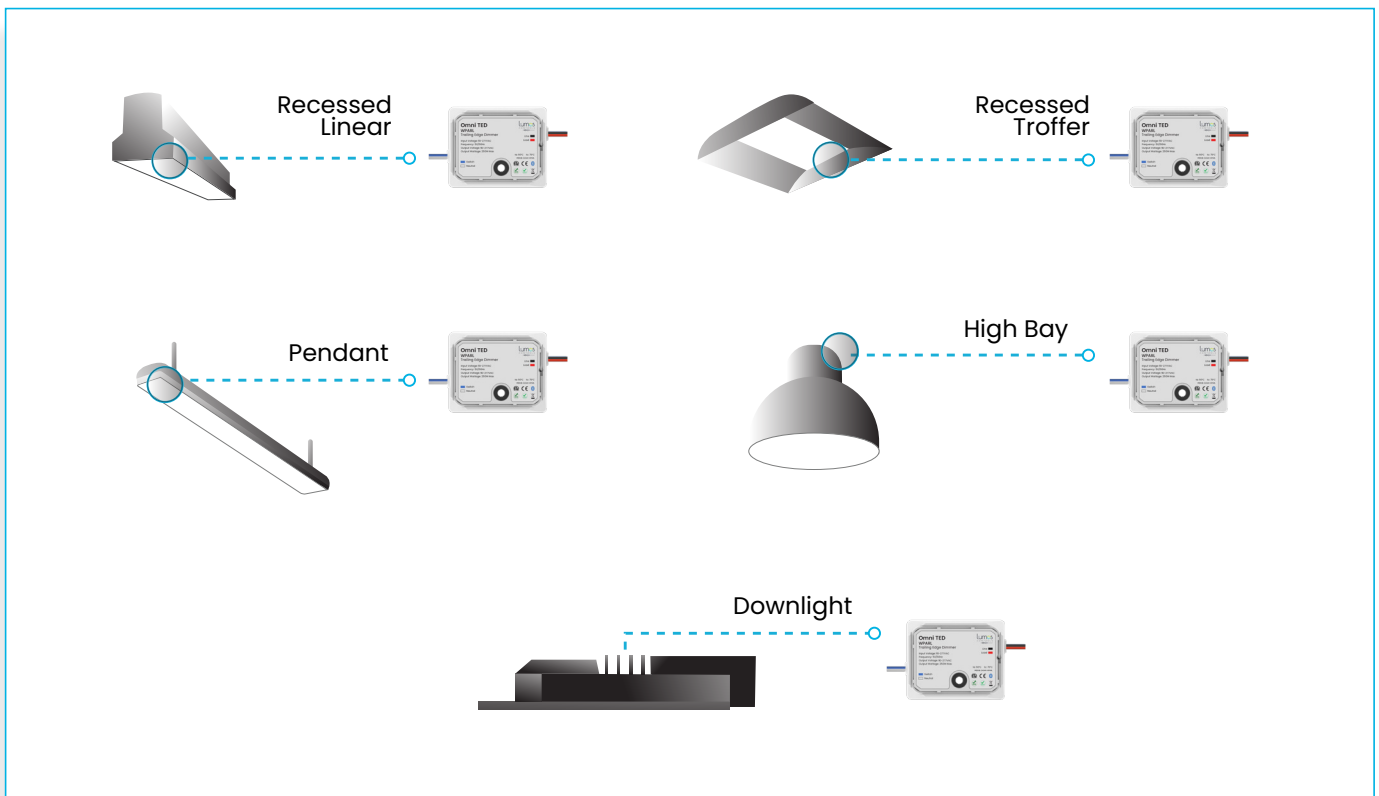




# WIRING



On the extrusion or on top of the fixture



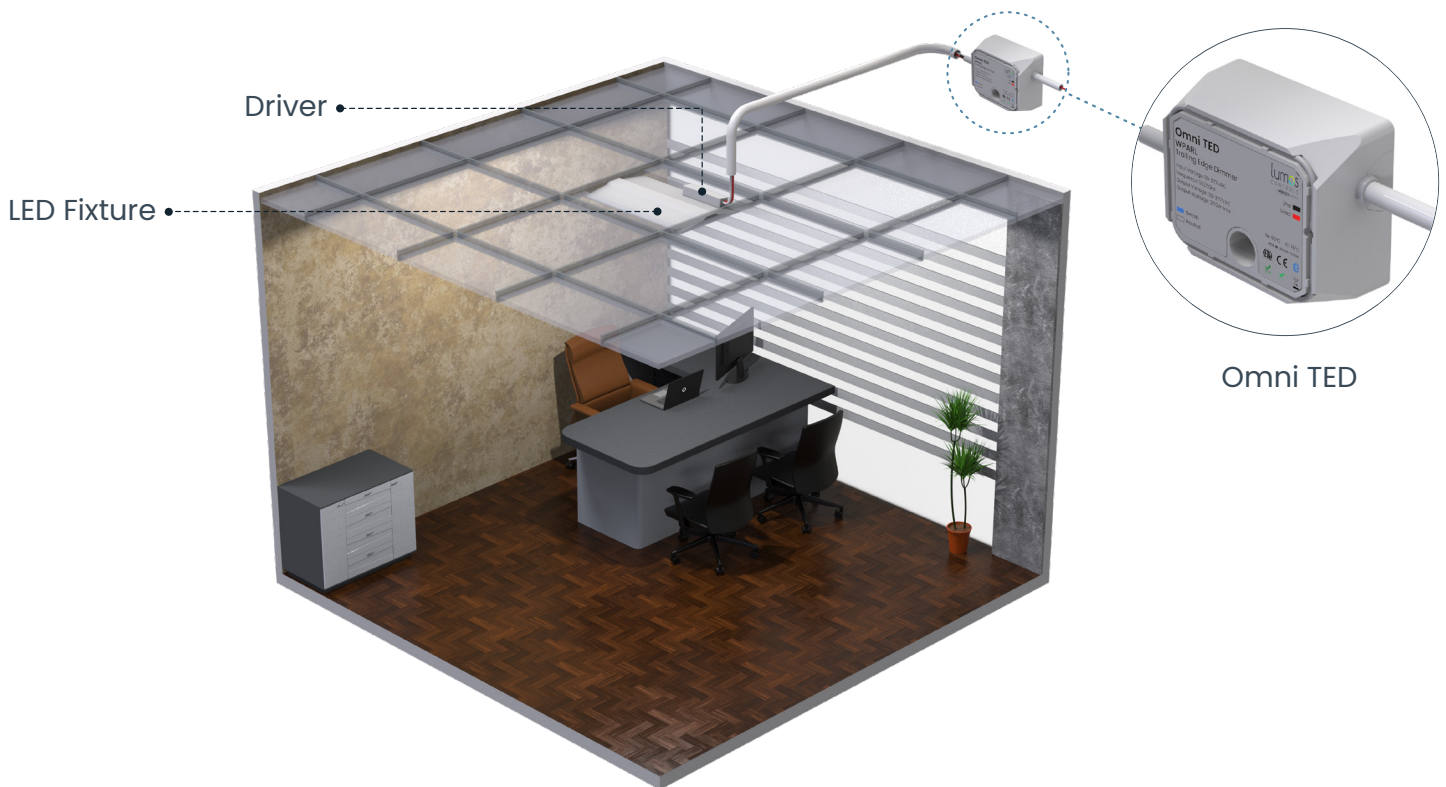
## Mounting Steps- Standard

Install the electrical box as per the local, state & national electrical codes and requirements

- Turn power OFF at circuit breaker and ensure the power is OFF before wiring
- Use electrical screw driver to remove three ½ inch knockouts (KO) from the junction box and they can be used for feeding Omni TED, mains input and connections to the driver.
- Take the AC line and neutral main wires through another KO hole of junction box.
- Connect the line (black) and neutral wires (white) of the Phase Dimmer with the line and neutral wires from mains.
- Take the Line and neutral wires from the driver in to the J-box through another knockout hole.
- To power the driver, connect the Load (Red) of Omni TED with Input Line of driver. Common neutral (White) with input neutral of driver.
- Install electrical box cover plate
- Restore power to the circuit breaker



## APPLICATION



## RF Guidelines

If pairing of devices are getting failed continuously then it may be due to BLE traffic. To reduce the traffic, power OFF other devices in the vicinity and pair again.

## TROUBLESHOOTING

Device doesn't operate immediately after power ON	Check whether the wiring is proper
Lights flickering	<ul style="list-style-type: none"> <li>• The connection is not appropriate</li> <li>• The wires are not secured firmly with connectors</li> </ul>
Lights did not turn ON	<ul style="list-style-type: none"> <li>• Circuit breaker tripped</li> <li>• Fuse has blown</li> <li>• Inappropriate wiring</li> </ul>

## COMMISSIONING

Once powered up, the device will be ready to be commissioned via the Lumos Controls mobile app, available for free download on [iOS](#) and [Android](#). To begin commissioning, click the '+' icon from the top of the 'Devices' tab. The app allows you to preset certain configurations which will be loaded after the device is added. The pre-configurations made using 'Commissioning Settings' will be sent to the devices being commissioned.

Once commissioned, the device will be displayed in the 'Devices' tab and you can perform individual operations like ON/OFF/dimming from this tab.



Please visit [Help center](#) for more details

## WARRANTY

5-year limited warranty

Please find warranty [terms and conditions](#)

Note: Specifications may change without notice

Actual performance can vary due to end-user environment and application

## LUMOS CONTROLS APPLICATION

Download the 'Lumos Controls' application from Play Store or App Store  
OR



Scan the QR codes to download the 'Lumos Controls' application



The Bluetooth® word mark and logos are registered trademarks owned by Bluetooth SIG, Inc. and any use of such marks by WiSilica Inc. is under license. Other trademarks and trade names are those of their respective owners.



20321 Lake Forest Dr D6,  
Lake Forest, CA 92630

 [www.lumoscontrols.com](http://www.lumoscontrols.com)  
 +1 949-397-9330