

# PRODUCT OVERVIEW



## CREATING INTELLIGENT SPACES

Easy to Specify

Quick to Install

Simple to Use



Head office

20321 Lake Forest Dr D6, Lake Forest, CA 92630

For enquiries

sales@lumoscontrols.com | +1 949-397-9330

# CHOOSE SMARTNESS TO SIMPLIFY EVERY STAGE OF YOUR JOURNEY

## AUTOMATE LIGHTING

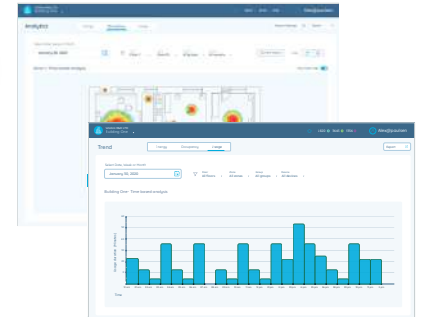
- ◆ Daylight Harvesting
- ◆ Occupancy Sensing
- ◆ Time Scheduling
- ◆ Code Compliance

## GO WIRELESS

- ◆ Manual Control
- ◆ Wireless Dimming

## INSIGHTFUL ANALYTICAL DATA

- ◆ Energy Management
- ◆ Device Usage Reports
- ◆ Space Management



## EXPAND BEYOND CONTROLS

- ◆ Asset & People Tracking
- ◆ Smart Workspace



## ANY BUILDING, ANY SYSTEM

- ◆ Integrate with any BMS
- ◆ Smart Emergency
- ◆ Green Building

# DEVICE PORTFOLIO

## CONTROLLERS

0-10V



**Radiator AF10\***  
2 Channel AC powered 0-10V  
fixture controller with inbuilt relay



**PSC-WCM-450-BLE-WS**  
Single channel AC powered 0-10V room  
controller with 20A rated relay

PHASE DIMMER



**Omni TED**  
Trailing edge  
dimmer

DALI



**Radiator AFD1/4**  
DALI 2.0 Controller with  
single/four drivers control

## SWITCHES



**Catron V**  
Wireless 5 button  
remote



Wireless self powered  
4/2 button switch



Dimmer wall switch  
with motion sensor



AC powered 1  
button wall switch



**Catron AI**  
AC powered switch interface  
for push button, toggle, and  
rotary switches



AC powered  
4 button  
wall switch



AC powered  
8 button  
wall switch



Wireless dual  
dial table mount  
rotary switch



Wireless dual  
dial wall mount  
rotary switch

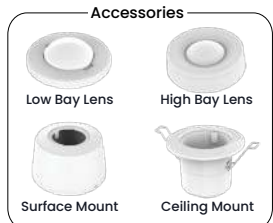
## SENSORS



**Cyrus AP**  
PIR motion &  
light sensor



**Cyrus AM\***  
Microwave motion &  
light sensor



**Cyrus F**  
DC powered fixture mount  
dual channel dimming  
motion & light sensor



**PSC-BL-I-FM-DC0-BLE-WS**  
Single Channel Dimming  
PIR Motion Sensor



**Cyrus AQ**  
Air Quality  
Sensor

## REPEATER



**Senor E**  
Beacon &  
range extender

## GATEWAY



**Enor E**  
Gateway with  
ethernet & RTC



**Iris E**  
Edge  
gateway



**Iris S**  
On premise  
server

## MODULE



**WIM 2480 E/C**  
Bluetooth-ready  
system-on-chip/  
modules

## SMART LED DRIVERS



**Ldrive RAM Series**  
Constant Current  
LED Driver



\* IP rated junction box available

# EFFORTLESS SETUP & CONTROL

Lumos Controls offers an easy-to-use platform to create intelligent spaces at scale. From quick commissioning to remote updates, it supports large spaces, multiple buildings, and expanding networks - all from a single app.

- Quick Commissioning**

Fast installation and large-group commissioning made simple.

- Feature-Rich Control**

Control over individual or grouped devices from anywhere.

- Smart Updates**

Mesh OTA upgrades in the background and focus on what is important.



- Easy Configuration**

Easy and quick configuration of multiple devices.

- Automated Lighting**

Automate lighting with sensor association and scheduling.

- Proactive Maintenance**

Monitor device health to stay ahead

Need help with lighting control specification or commissioning? Our expert team can assist you with project-ready documents and setup support.

# ANALYTICAL REPORTS

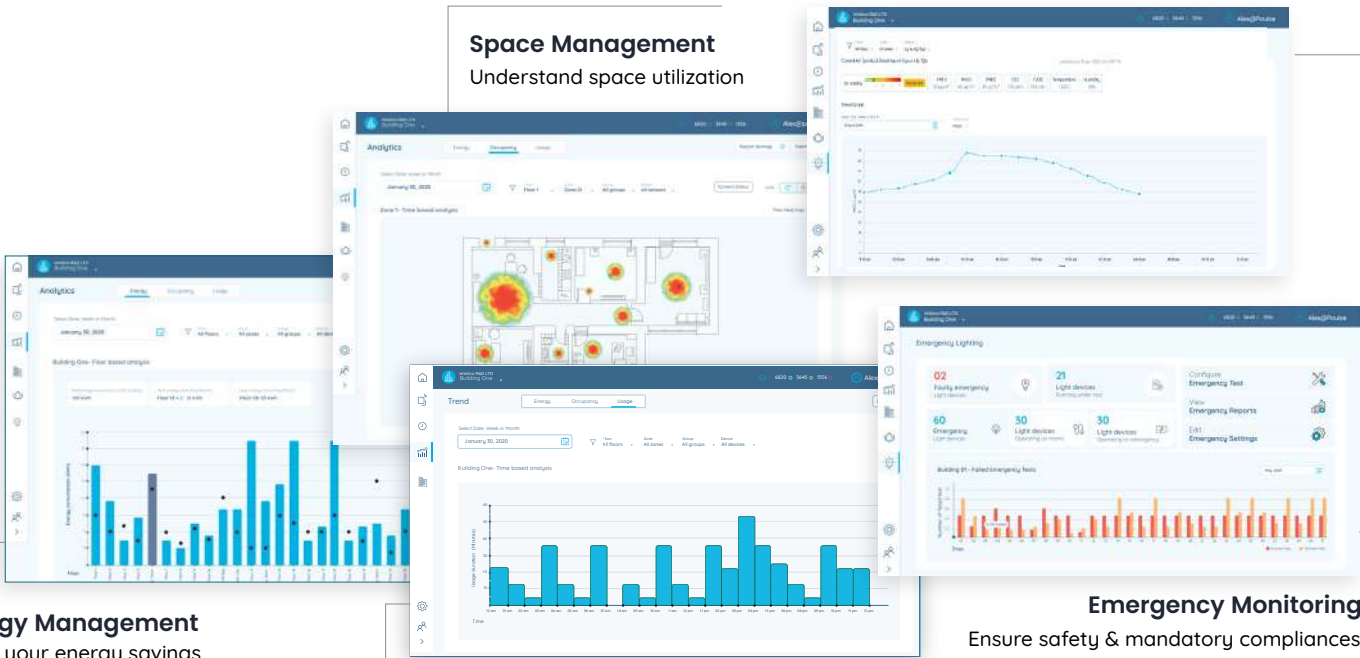
Get reports to plan your next course of action!

## Air Quality Report

Ensure clean air across your spaces

## Space Management

Understand space utilization



**Energy Management**  
Know your energy savings

**Device Usage Reports**  
Monitor the usage of your devices

**Emergency Monitoring**  
Ensure safety & mandatory compliances

# SMART CONTROLS INTEGRATION



Building Management System (BMS)



Open ADR

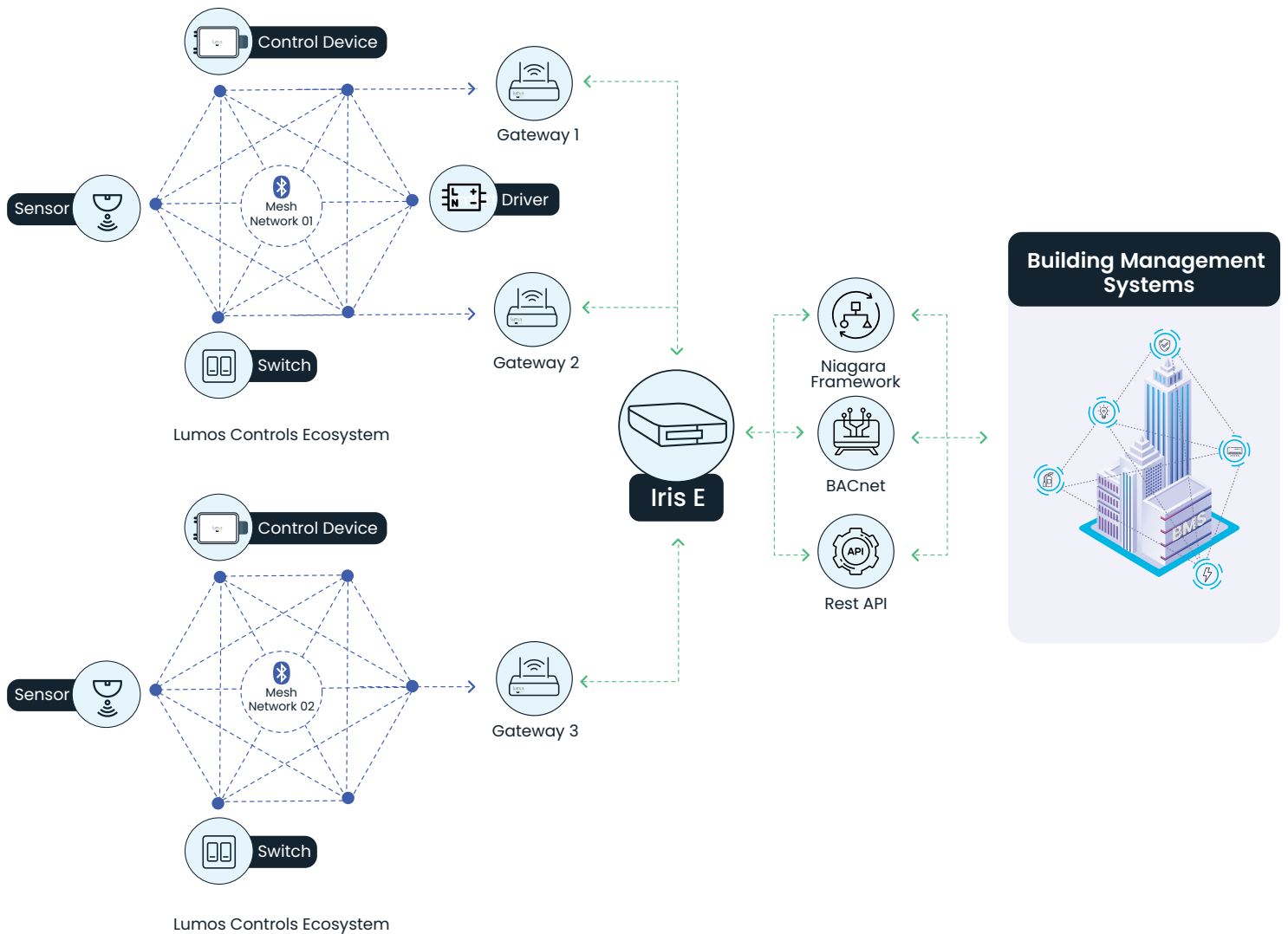


3<sup>rd</sup> Party System via RS232 & API



Google & Alexa

## INTEGRATION WITH BUILDING MANAGEMENT SYSTEM. ANY BUILDING, ANY SYSTEM






Flexible integration with **120+** BMS enables easy inter-operations.




# SMART EMERGENCY LIGHTING SYSTEM

Meet occupant safety requirements in buildings and save on operational expenses with self testing emergency lighting system.

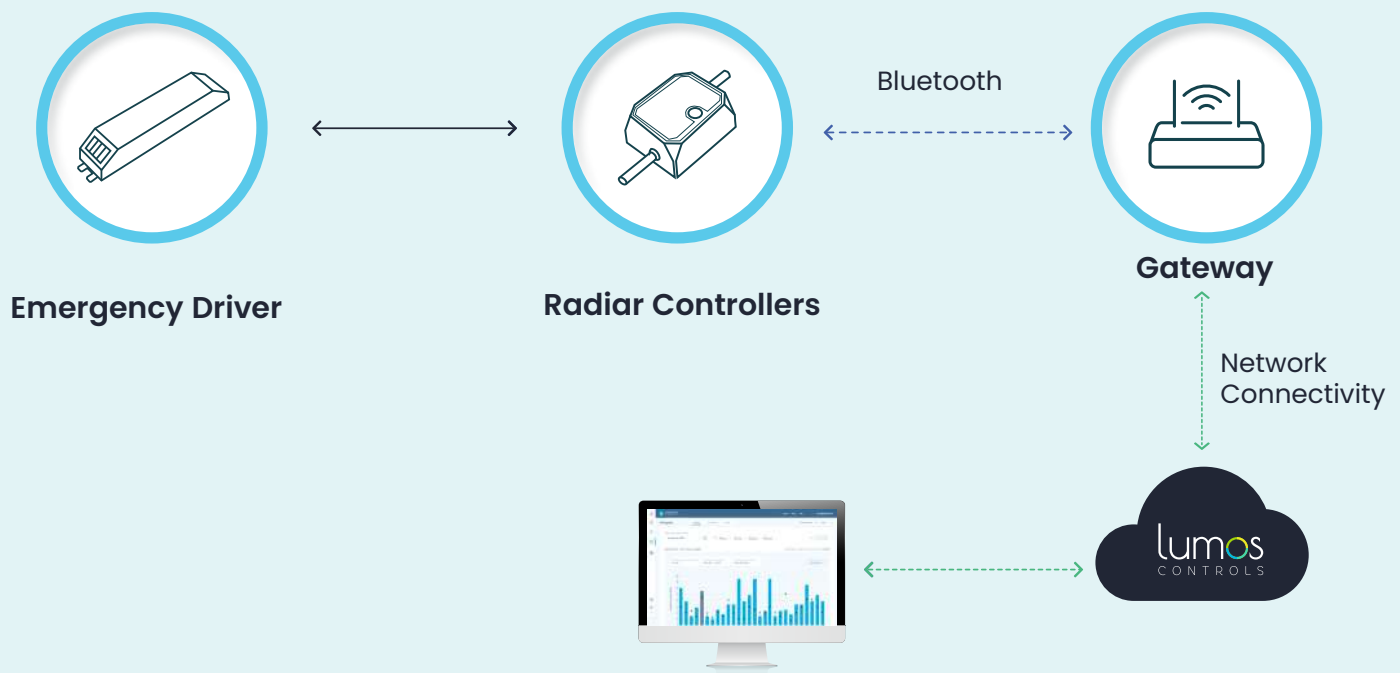
## NFPA 101 – Life Safety Code

-  30-second test every 30 days.
-  90-minute duration test once a year.
-  Record keeping and reporting to local authorities for compliance.

## BS5266

-  3-hour illumination requirement during a power outage.
-  Regular testing and maintenance for emergency lighting systems.
-  Full compliance reports and certification for audits and legal purposes.

## HOW IT WORKS?



## ENERGY CODE COMPLIANCE





# INTELLIGENT SPACE MANAGEMENT WITH AI-BASED LIGHTING



## ANALYZE YOUR SPACE UTILIZATION IN DEPTH

- ▶ Efficient lighting management with accurate footfall data
  - ▶ Precision lighting: illuminating required areas
  - ▶ Visually appealing space
  - ▶ Optimizing lighting numbers: maximum efficiency
- ▶ People counting made easy: unveiling space utilization patterns

## IRIS S ON-PREMISE SOLUTION

Lumos Controls On-Premise Solution brings the power of the Lumos Controls cloud to your doorstep by offering unparalleled control, security, and functionality without relying on external servers. Tailored for installations with unique requirements, it ensures a robust and reliable lighting ecosystem. With this addition, every feature offered by Lumos Controls, including advanced features like schedules, sensor automation, BMS integration, Smart emergency lighting etc. can now be enabled without internet connectivity.

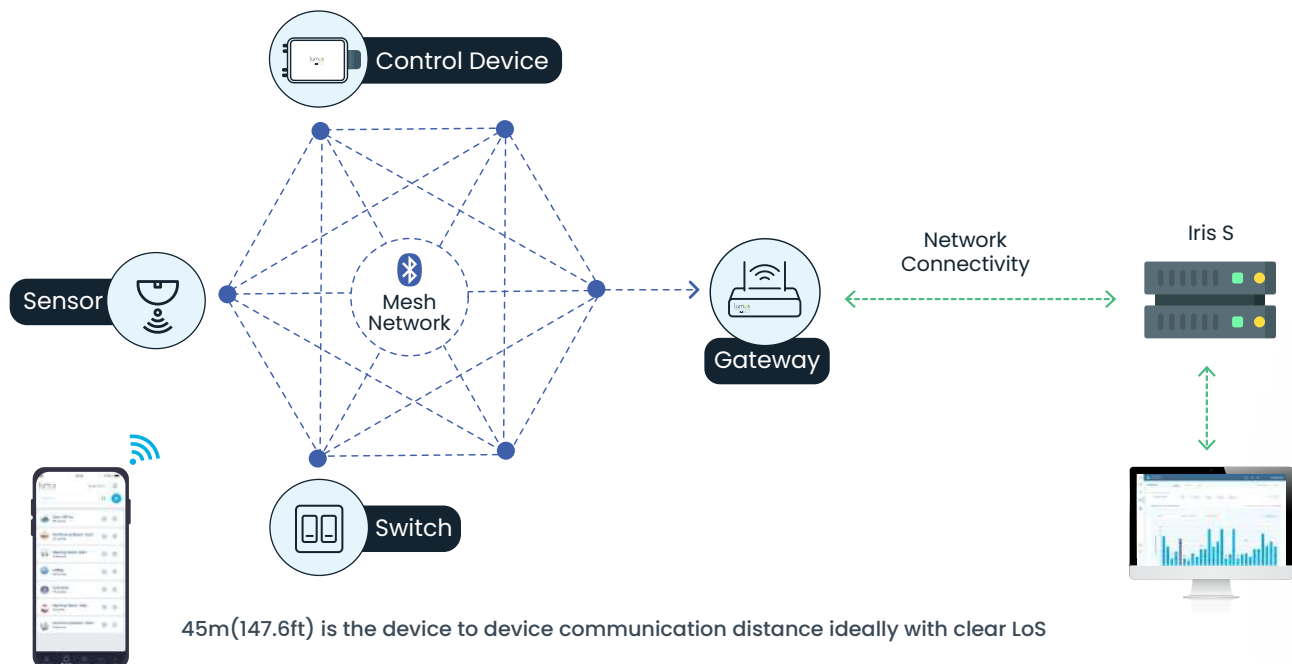
### BENEFITS

**Data Security**

**Internet Independence**

**Reliability & Performance**

**Comprehensive Control**



## Residential

## Offices

## Manufacturing

## Parking

## Retail

## Sports

## Warehouse

## Street lights

## Museums

## Hospitality

**SERBIA LUXE  
RESIDENCE  
HAVEN**  
BELGRADE, SERBIA

**FOX  
ROTHSCHILD  
OFFICE**  
NEW YORK, US

**CHANG'AN  
AUTOMOBILE**  
CHONGQING CITY, CHINA

**MUNICIPALITY OF  
HELLEVOETSLUIS**  
HELLEVOETSLUIS, NETHERLANDS

**CH PREMIER  
JEWELERS**  
CALIFORNIA, US

**WAYNE  
GRETZKY ARENA**  
ONTARIO, CANADA

**EBARA  
WAREHOUSE**  
CALIFORNIA, US

**ROTOVA  
POLYGON**  
VALENCIA, SPAIN

**VIETCOMBANK**  
HANOI, VIETNAM

**MARRIOTT  
VINPEARL HOTEL**  
CAN THO, VIETNAM

**lumos**  
CONTROLS  
A **WISILICA** BRAND

Copyright 2025. Wisilica Inc. All Rights Reserved

### Head office

20321 Lake Forest Dr D6  
Lake Forest, CA 92630  
+1 949-397-9330  
[www.lumoscontrols.com](http://www.lumoscontrols.com)

### Follow us on



### For enquiries

[sales@lumoscontrols.com](mailto:sales@lumoscontrols.com)